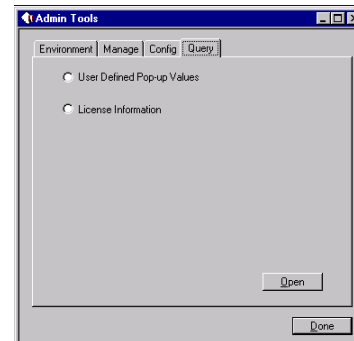
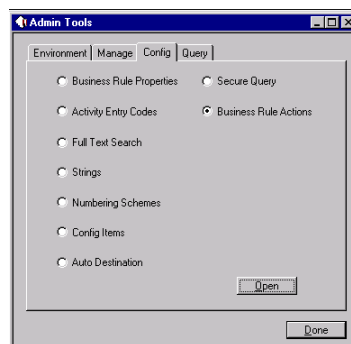
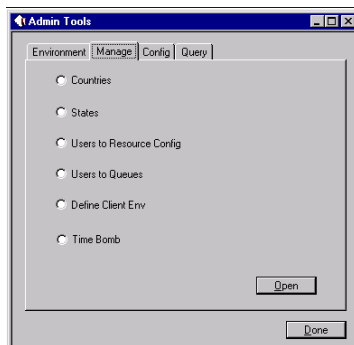


Simplify your daily Clarify Administration tasks with:

ptAdmin

Currently, Clarify requires system administrators to enter multiple configuration applications, such as Clarify Data Exchange and Clarify UI Editor, to manage their Clarify environment. Maintaining the Data Exchange parameter files, and toggling between multiple applications to perform daily administrative tasks is tedious and very time consuming. The ptAdmin tool collaborates administrative functions into a single utility that allows system administrators to configure their Clarify environment from directly within the client application.



“allows system administrators to configure their Clarify environment from directly within the client application.”

Features

ptAdmin allows the administrator to set the following environment lists and parameters from directly within the Clarify Client application:

- [Users to Resource Configurations](#)
- [Users to Queues](#)
- [Define Client Env Manager](#)
- [Time Bomb Manager](#)
- [Business Rule Properties](#)
- [Activity Entry Codes](#)
- [Full Text Search](#)
- [Strings](#)
- [Numbering Schemes](#)
- [Configuration Items](#)
- [Auto-Destination Rules](#)
- [Queries to Find Values Within User Defined Pop-up Lists](#)
- [Queries to Monitor License Information](#)



1710 Zanker Road #202
San Jose, CA 95112
Tel: (408) 467-0765
Fax: (408) 467-0767
www.pt2ptsolutions.com

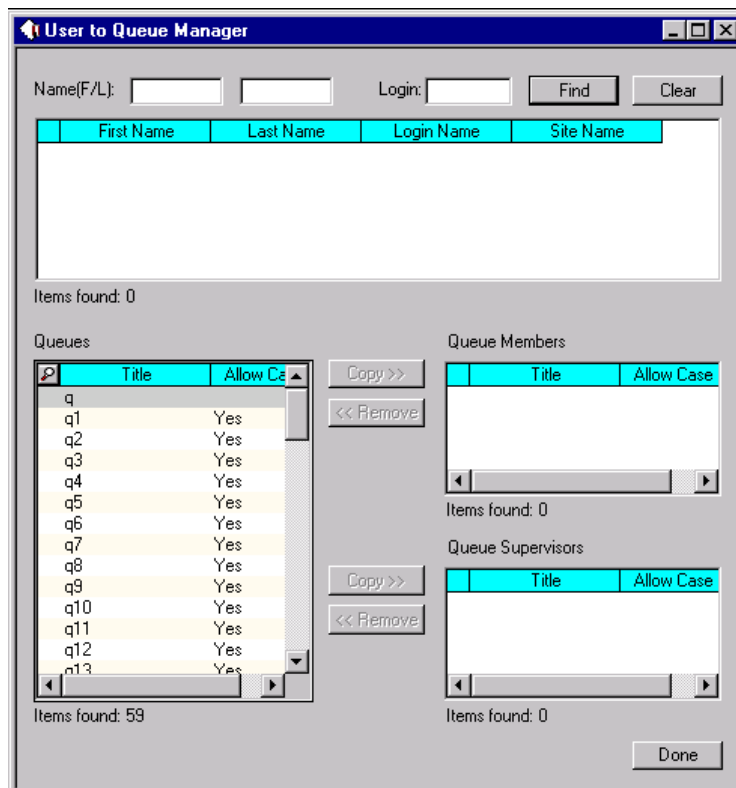
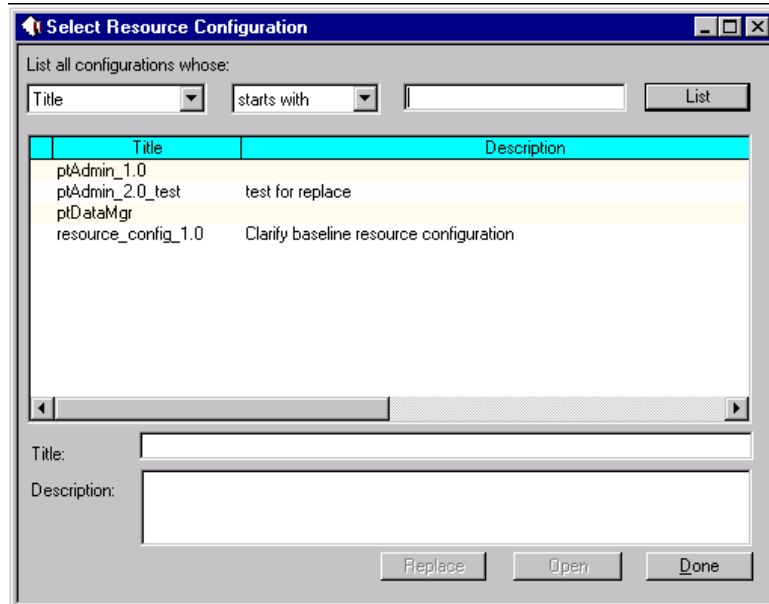
For more information on ptAdmin, contact Point2Point Solutions’s Sales at (408) 467-0765; or via email at sales@pt2ptsolutions.com; or via the World Wide Web at www.pt2ptsolutions.com.

Users to Resource Configurations

Through Clarify's conventional methodology, creating user accounts is a two-step process. First, the user's account must be set up within the Clarify client. Then the administrator must open Clarify's UEditor and associate the user to a Resource Configuration.

Within Clarify, users are only able to see forms that are in their Resource Configuration (a Resource Configuration associates a group of users to a set of forms).

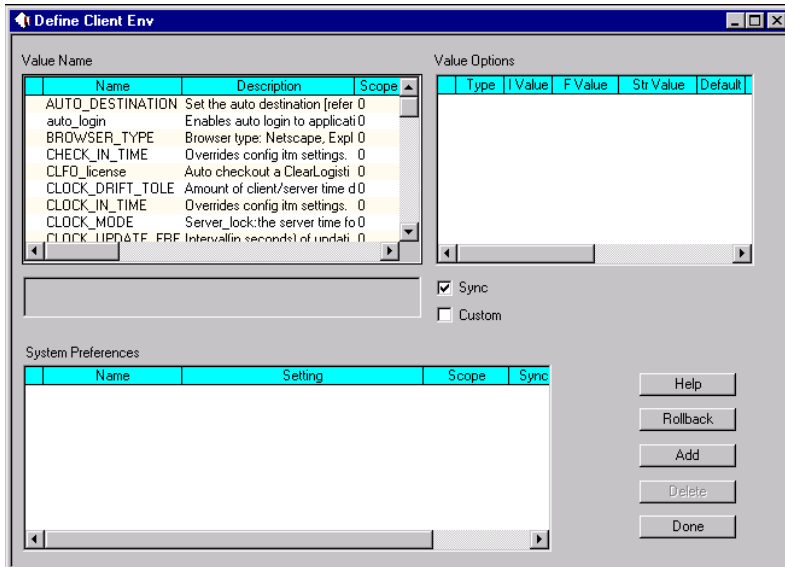
Using ptAdmin, Administrators no longer need to open Clarify's UEditor. All changes can be done directly from the Clarify Client application.



Users to Queues

For Clarify Administrators whose Clarify environment contains numerous Queues, the task of associating an employee to their Queues can be monotonous and mind numbing. Within Clarify's current process, the task of associating new users to Queues would require the Administrator to open the Queue screen and associate the new user to each Queue that they have membership to.

ptAdmin allows the Clarify Administrators to associate the new user to multiple Queues directly from one screen. Forget the hassle of opening each Queue to add a user to it. Take care of this task quickly and easily with ptAdmin.



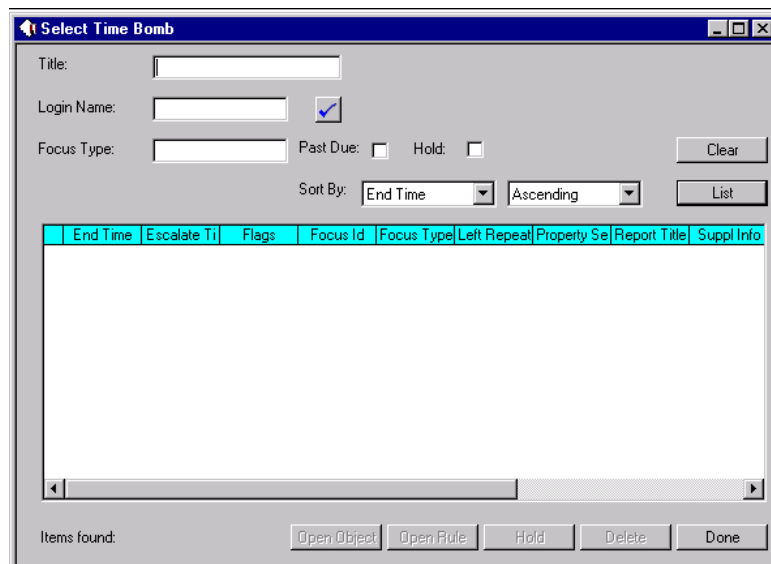
Define Client Env Manager

One of the most troublesome tasks of an upgrade and daily user support is configuring each clients Clarify.env file. In most company instances, user's Clarify.env file may vary according to which department the user belongs to. The Clarify.env Manager will allow a Clarify Administrator to configure Clarify.env settings globally across the Clarify environment. To sync up their Clarify.env file, all the user needs to do is click one button. It can't get any easier...

Time Bomb Manager

A common task for all Clarify Administrators is to make sure all processes are up-and-running, especially Clarify's RuleManager. Clarify's RuleManager sends notifications, operates auto-destination rules, and fires email from a list of tasks in the time bomb table.

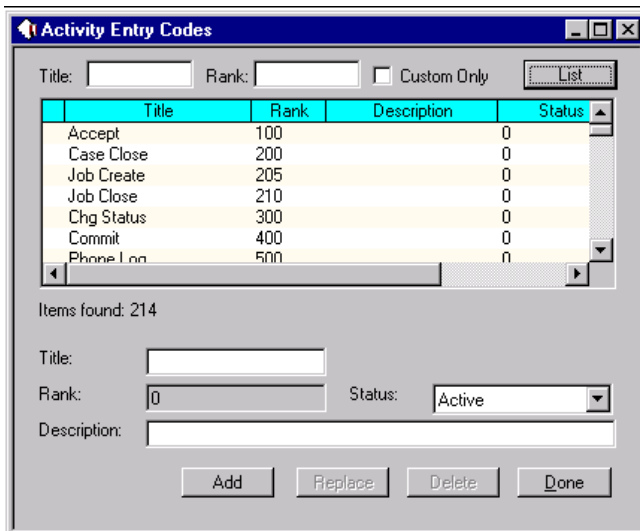
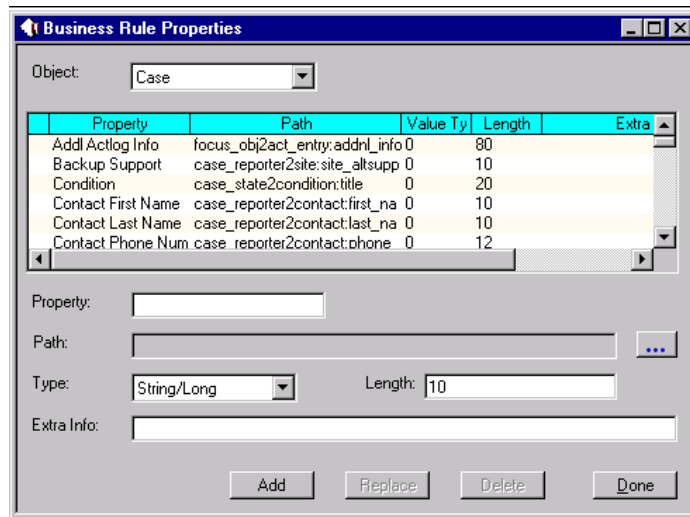
However, not only would the Time Bomb Manager allow the Administrator to monitor the time bombs, it would also allow them to place the time bomb on hold. Time bombs could be temporarily placed on hold or deleted from the table directly through this user interface. Quickly identify the object that the time bomb is linked to and open them by just clicking one button.



Business Rule Properties

As Clarify systems are enhanced, custom fields that are unique to the company's business model and workflow are added to the database. In many cases business rules will need to be created off of these newly added custom fields. Adding these new business rule properties can be a very tedious task using Clarify's conventional methods of creating the business rule property file and using Data Exchange to import it into Clarify.

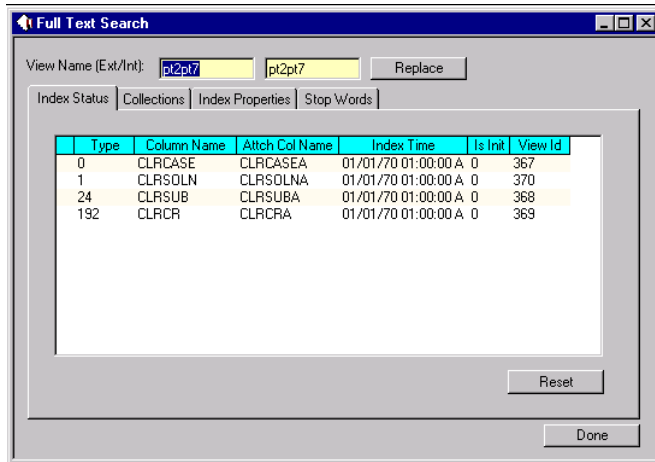
With ptAdmin, adding these new business rule properties can be done directly through an easy-to-use graphical interface. Simply select the object that contains the new field, link the path to the new field, and you're done. Business rules can now be fired off of the new field you have just created.



Activity Entry Codes

In most cases, when completing customized workflows, users would like to track and view the new procedures in Clarify's Activity Log. To accomplish this, new activity entries need to be created. Traditionally, this would require the Administrator to write code and import it into Clarify through Data Exchange.

With the Activity Entry Codes module, Administrators can search and create Activity Entry Codes on the fly through a GUI interface. Forget writing code and complete this task in a few easy steps.



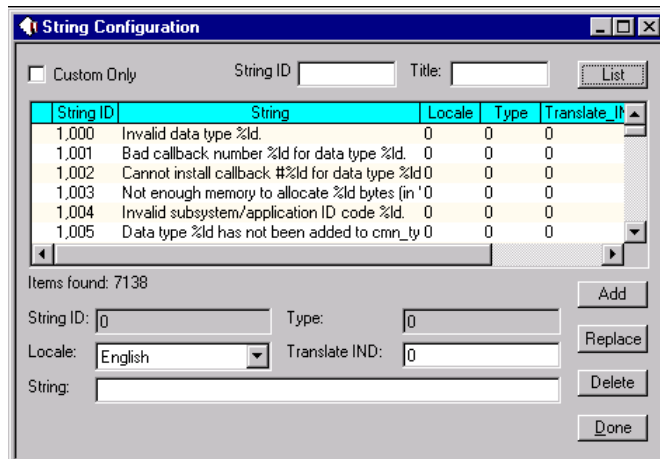
Full Text Search

Currently, if a Clarify Administrator would like to check what objects are indexed, update collections, modify index properties, or create stop words, it would all have to be done by modifying a file and importing it using the Dataex utility.

Manage your Full Text Search properties all from one screen with ptAdmin's Full Text Search utility. Adding new index properties, stop words, and collections can be done with a couple of steps through our GUI interface. Once your changes have been made, and the Full Text Search service has been restarted and the tables indexed, all your new modifications would take affect.

Strings

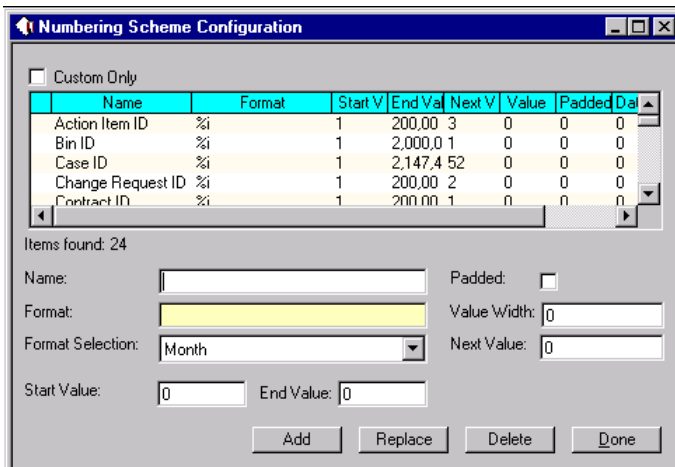
Get away from importing files into Clarify using Data Exchange. Add new activity notes and modify existing window headers from directly within the Clarify Client. ptAdmin's String Configuration utility allows the Administrator to step away from the hassle of importing .dat files, and gives them an easy-to-use GUI interface to complete these tasks.



Numbering Schemes

Numbering Schemes is a method of having Clarify generate unique numbers to objects automatically. Clarify provides a utility in their Policies and Customers module to define the numbering scheme for objects that are already present in the database. However, if you would like to create a numbering scheme for a new object, a data file would have to be imported into Clarify through Dataex.

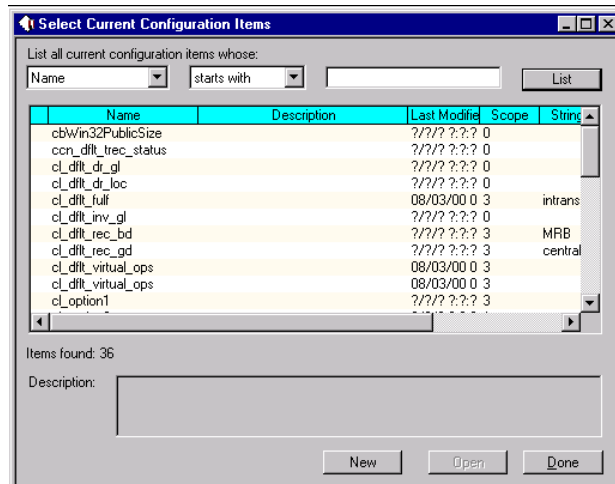
In ptAdmin, new and existing objects can be created and defined through a GUI interface. Quickly and easily add or update a new numbering scheme for an object with a click of a button.



Configuration Items

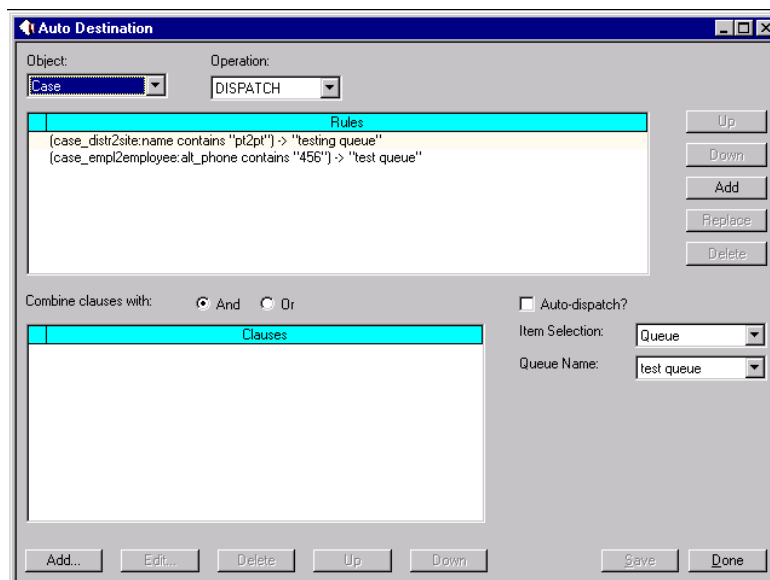
Ever wondered how to change Clarify functionality globally? Well, modifying the config.dat file can do many of these changes. However, the hard part is to figure out the syntax for the configuration change and to see if the parameter could be changed at all.

ptAdmin's Configuration Items module not only provides you with an easy to use GUI interface, but a list of documented and undocumented configuration item settings. Making global functionality changes could never be easier.



Auto-Destination Rules

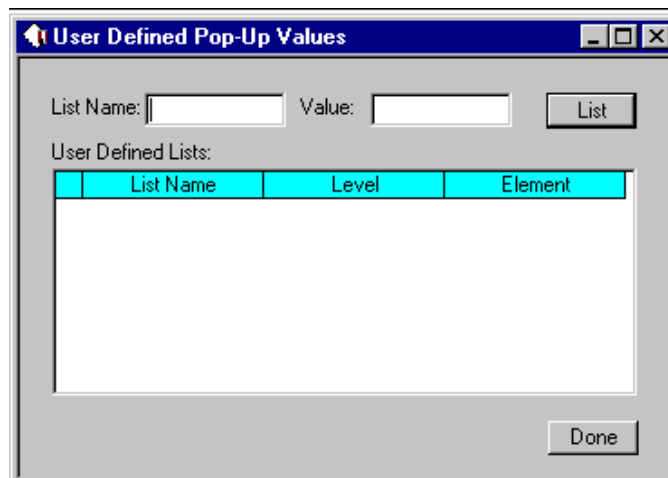
Creating Auto-Destination Rules consist of looking up traversal paths to required fields, researching the proper syntax for each statement, writing some code, and importing it into the database. However, ptAdmin's Auto-Destination Rules Configurator eliminates the need to research the proper syntax, write code, and import anything into the database. ptAdmin provides a GUI interface where setting up an Auto-Destination rule can be done with just a few clicks from your mouse.



Queries to Find Values Within User-Defined Lists

When updating values in User Defined Popup lists, sometimes the hardest task is to find what's the name of the List itself. Currently, if you do not know the name of the UDP, your only option within the Clarify Client is to start scrolling through the list to find one with the appropriate values. Sometimes this task itself takes ten to fifteen minutes. Sometimes you look through all the values only to find that the list is a static list or a Clarify defined list.

With ptAdmin, plug in a User-Defined value, and it will pull up the list that it belongs to. Another frustrating task made easy.



Queries to Monitor License Information

Monitoring concurrent license usage is another important task for all Clarify Administrators. Use ptAdmin's License Monitor to get a snapshot of the current license usage at any time of the day. Know when you are out of available concurrent licenses before your users tell you they are locked out of the system.

